

MA18 Series

The MA18 series is a 2mm pitch FFC socket connector developed for miniature HDD and main port connection. 44 contacts are provided for AT bus connection.

■ Ordering Information

MA18A - 44 D A - 2 DSE

① ② ③ ④ ⑤ ⑥

① Series Name : MA18A	⑥ Contact type (Straight type)
② Number of contacts : 32, 44	DSA : Dip length 3mm
③ Contact alignment : D : Double row	DSB : Dip length 2.5mm
④ Contact plating type A : Selective gold plated	DSC : Dip length 2mm
⑤ Contact pitch : 2mm	DSE : Dip length 1.2mm

■ Variation in Number of Contacts

Part Number	CL No.	Remarks
MA18 -32DA-2DSE	—	With extraction tab
MA18 -44DA-2DSC	588-0252-3	With extraction tab
MA18 -44DA-2DSE	588-0246-0	With extraction tab
MA18A-44DA-2DSA	588-0247-3	No extraction tab
MA18A-44DA-2DSB	588-0255-1	No extraction tab
MA18A-44DA-2DSC	588-0253-6	No extraction tab
MA18A-44DA-2DSE	588-0251-0	No extraction tab
MA18M-44DA-2DSB	588-0291-5	High profile mount type

Remark 1. The extraction tab is used to remove a cable nut in the engagement state.

2. 32 contacts = 0.76 μ and 40 contacts = 0.2 μ in the plating thickness.

■ Pin Heade

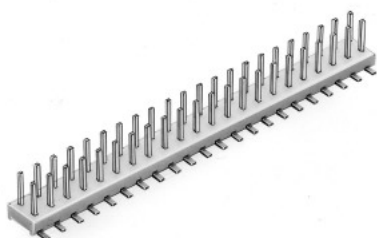
(1) Conventional product (used as conventional HDD interface pin header)

- Straight through hole type (see catalog page C15)



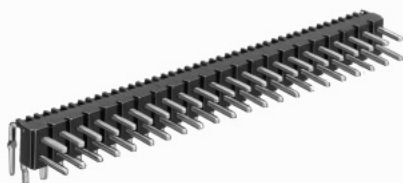
44 contacts : A3C-44P-2DSA (see photo)
50 contacts : A3C-50P-2DSA

- Straight SMT type (see catalog page C22)



44 contacts : A3-44PA-2SV (see photo)
50 contacts : A3-50PA-2SV
(With boss type available)

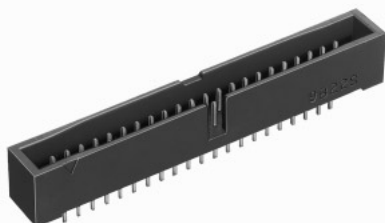
- Right angle through hole type (see catalog page C13)



44 contacts : A3B-44PA-2DS (see photo)
50 contacts : A3B-50PA-2DS

(2) Box type product (Socket side prevents mis-insertion)

- Straight through hole type(see catalog page C28)

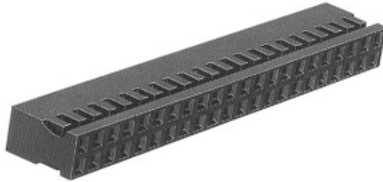


44 contacts : A3E-44PA-2DSA (see photo)
50 contacts : A3E-50PA-2DSA
Note: Correspond to A3E series socket only.

■Socket

(1) Products suitable to various cables

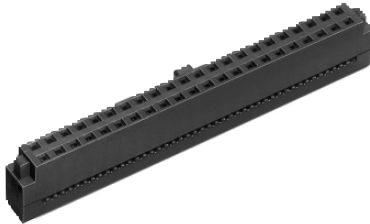
- Discrete wire Crimping Type (see catalog page C19)



44 contacts: A3B-44D-2C

Crimping contacts and crimping tools are detailed on page C20.

- Ribbon Cable (1mm pitch) Batch ID Type (see catalog page C29)

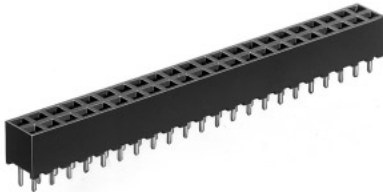


44 contacts: A3E-44D-2R (see photo)

50 contacts: A3E-50D-2R

Insulation displacement is detailed on page C31.

- FPC Connection Type



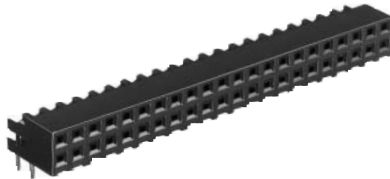
44 contacts: MA18A-44DA-1SE (photo)

(For a typical example, products are provided corresponding to various board thickness. For details, refer to page C32.)

50 contacts: A3E-50D-2R

(For a typical example, products are provided corresponding to various board thickness. For details, refer to page C17.)

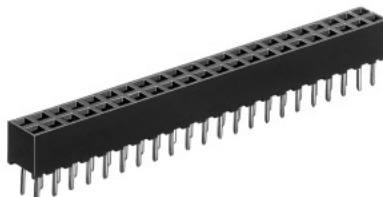
(2) Right Angle through hole Type (see catalog page C15.)



44 contacts: A3-44DA-2DS (see photo)

50 contacts: A3-50DA-2DS

(3) Straight through hole Type



44 contacts: MA18A-44DA-2DSS (see photo)

(See catalog page C32.)

50 contacts: A3C-50DA-2DSA (see catalog page C17.)